

WCCUSD

West County Full Services Community Schools

March 6, 2013



Tashaka Merriweather
Coordinator Youth Development Programs

FSCS District Planning Process

- Pre Plan
 - Educate and Form District Team
 - Develop Theory of Change (TOC)
 - Map District Needs and Assets
 - Design Planning Process
- Plan
 - Educate and Engage Stakeholders
 - Form Planning Collaborative
 - Develop Foundational Elements
 - Develop Infrastructure
 - Develop Program Components (Task Forces)
 - Complete Implementation Plan
- Implementation
 - Pilot
 - Scale Up

Where is WCCUSD Today ?

- Pre Plan
 - Educate and Form District Team
 - Develop Theory of Change (TOC)
 - Map District Needs and Assets
 - Design Planning Process

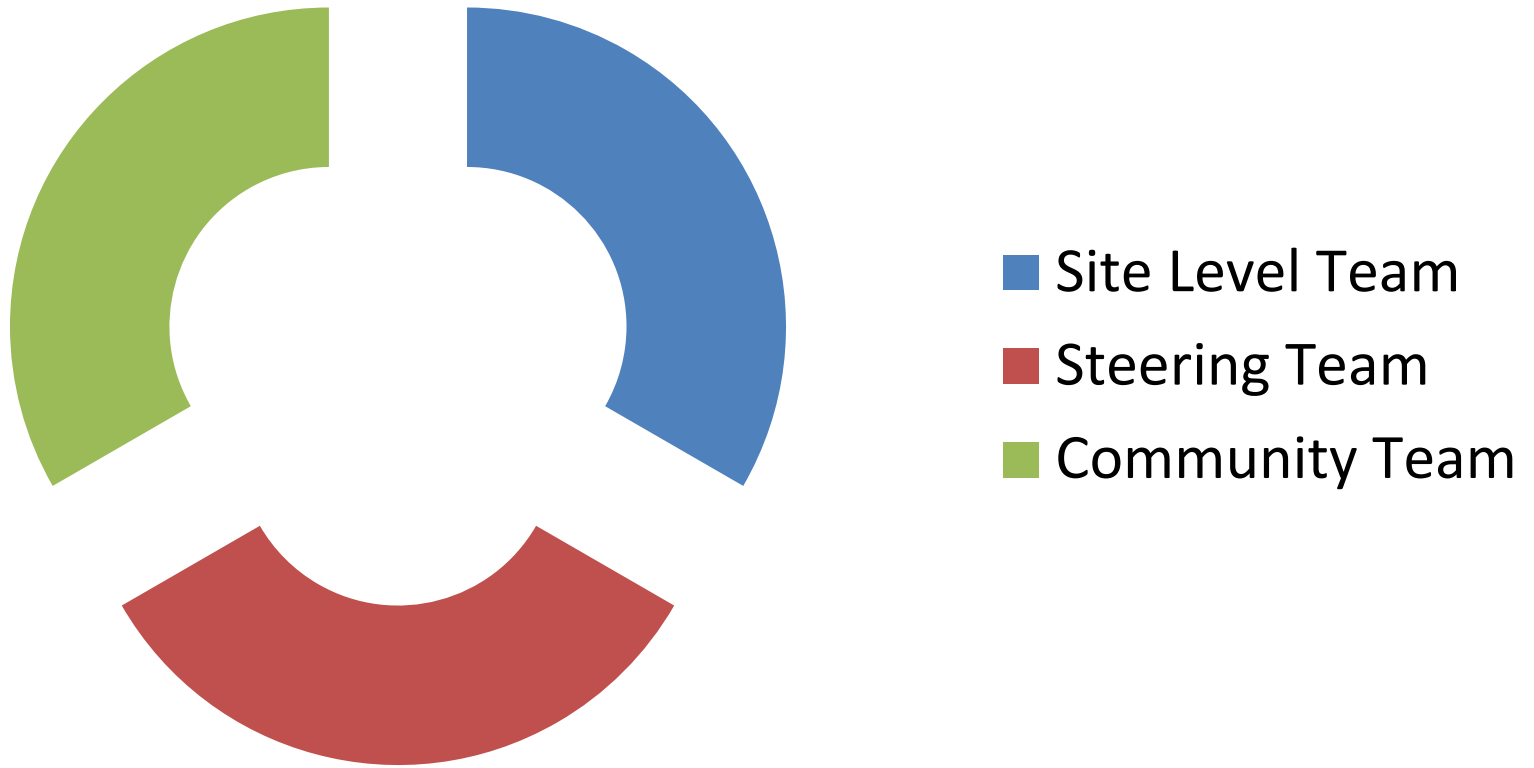
Overall Pre-Plan Process

Pre-Plan

- **Educate and Form District Team**
 - Research
 - Site Visits
 - Outside experts or facilitator
 - Group Norms
 - Outreach to key partners
- **Develop Theory of Change (TOC)**
 - Background and assumptions
 - Definition of success
 - Challenges and barriers
 - Rationale for FSCS Pilot and Scale-up
- **Map District Needs and Assets**
 - Readiness assessments
 - Site and District needs
 - Service and assets
 - District silos, gaps, and duplications
 - District priorities
 - Existing Partnerships
- **Design Planning Process**
 - Expanded TOC informed by data
 - Plan for Engaging stakeholders
 - Proposed planning infrastructure, including representation, intermediary functions, and timeline
 - Communication tools
 - Grant Proposals

How is it going to get Done ?

WCCUSD Pre-Plan Process



Working Definition of FSCS

- "West County Full Service Community Schools" is an integrated, comprehensive, coordinated initiative aimed at achieving educational success, well-being and self-efficacy for students, families and communities.