



# RICHMOND POLICE DEPARTMENT

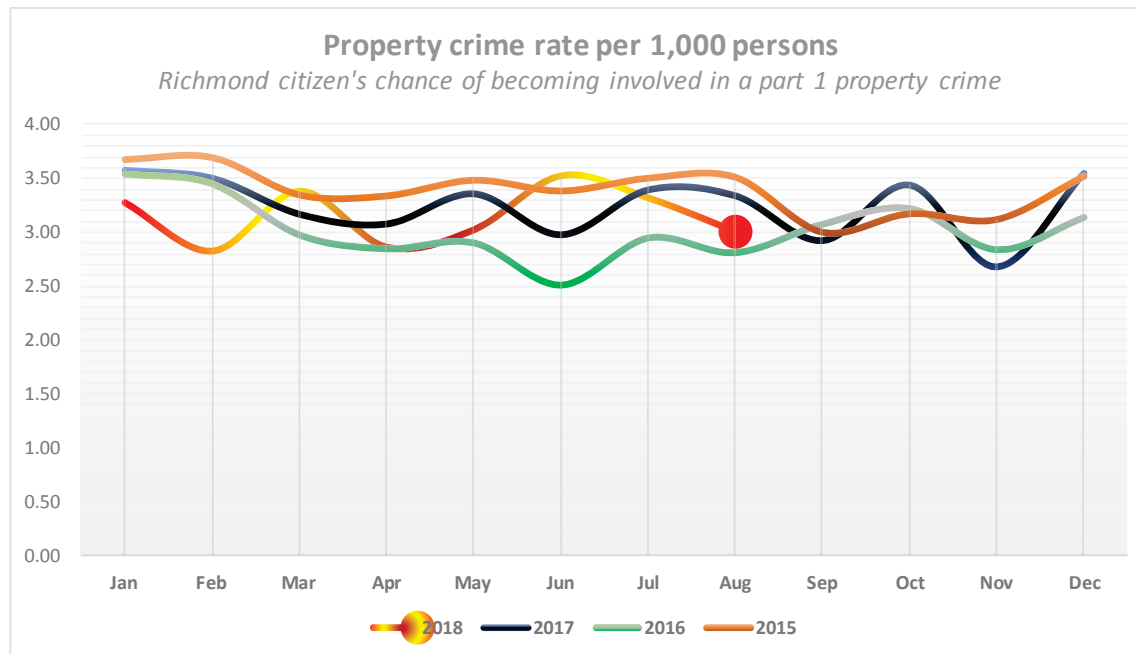
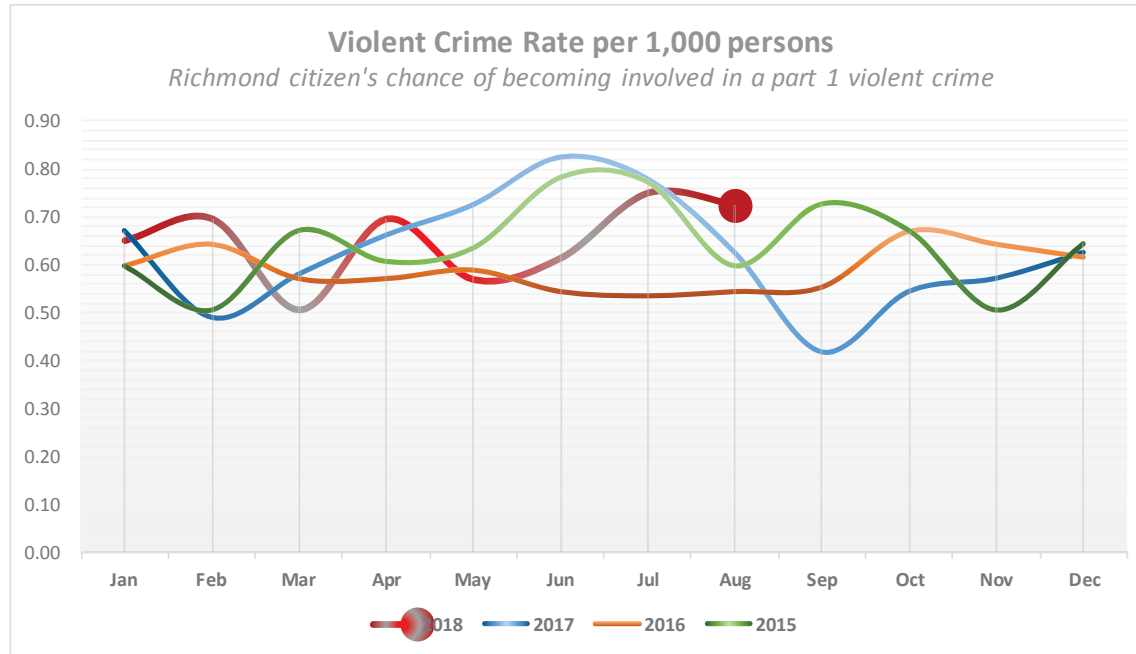
**PRE-UCR REPORT**  
\*as of reports completed on  
9/10/18



CITYWIDE CRIMES 2018	July	Aug	Month%	2yragv (1SD)	YTD2017	YTD2018	YTD%	YOY2017	YOY2018	YOY%	Prev 90	Last 90	L90%	
	Monthly		Quantitative statistics		Year vs Year			12 months vs 12 months			Last 90 vs Previous 90 days			
<b>VIOLENT CRIMES</b>														
[211A] Armed Robbery	12	6	-50%	14	5	131	89	-32%	194	138	-29%	27	30	+11%
[212.5] Home Robbery	2	3	+50%	2	2	11	17	+55%	17	23	+35%	2	5	+150%
[211E] Estes Robbery	1	7	+600%	2	2	17	17	0%	22	23	+5%	6	9	+50%
[211S] Strongarm Robbery	13	14	+8%	14	3	115	110	-4%	178	165	-7%	40	44	+10%
[664/211] Attempted Robbery	4	2	-50%	2	2	21	23	+10%	25	27	+8%	7	7	0%
[215] Carjacking	6	0	-100%	3	2	21	20	-5%	35	28	-20%	5	10	+100%
[245 A1] Assault D. Weapon	20	24	+20%	16	6	130	157	+21%	177	202	+14%	55	65	+18%
[243 D] Aggravated Battery	5	3	-40%	3	2	30	26	-13%	40	37	-8%	8	15	+88%
[245 A2] Assault with Firearm	8	9	+13%	6	2	45	48	+7%	75	75	0%	18	18	0%
[664/187] Attempted Homicide	1	2	+100%	1	1	5	6	+20%	7	7	0%	1	3	+200%
[187] Homicide	1	4	+300%	1	1	12	13	+8%	18	16	-11%	7	6	-14%
[246] Shooting @ Dwelling	7	13	+86%	11	4	98	76	-22%	145	114	-21%	24	27	+13%
[247] Shooting @ Vehicle	2	1	-50%	3	2	18	24	+33%	27	34	+26%	12	5	-58%
[261] Rape	4	1	-75%	3	2	20	18	-10%	35	28	-20%	9	6	-33%
[288] [289] Child, Sodomy	6	5	-17%	4	2	33	32	-3%	42	45	+7%	11	13	+18%
[243 E1] Domestic Battery	19	23	+21%	17	4	112	149	+33%	188	217	+15%	56	54	-4%
[273.5] Domestic Battery	34	36	+6%	29	7	245	189	-23%	392	309	-21%	61	91	+49%
<b>PROPERTY CRIMES</b>														
[451] Arson	8	10	+25%	4	2	33	38	+15%	40	52	+30%	10	21	+110%
[459A] Auto Burglary	90	78	-13%	94	14	741	728	-2%	1,132	1,123	-1%	250	296	+18%
[459C] Commercial Burglary	15	13	-13%	14	3	112	105	-6%	162	163	+1%	38	42	+11%
[459R] Residential Burglary	33	21	-36%	34	10	338	244	-28%	456	349	-23%	99	86	-13%
[487] Grand Theft	32	25	-22%	21	5	159	197	+24%	222	288	+30%	69	83	+20%
[484G/488/484] Petty Theft	83	93	+12%	83	13	714	630	-12%	1,012	977	-3%	222	261	+18%
[10851] Vehicle Theft	105	91	-13%	102	15	811	837	+3%	1,237	1,214	-2%	333	297	-11%
<b>Total Violent Crimes</b>	83	80	-4%	70	10	591	576	-3%	865	814	-6%	196	231	+18%
<b>Total Property Crimes</b>	366	331	-10%	351	28	2,908	2,779	-4%	4,261	4,166	-2%	1,021	1,086	+6%
<b>Total Violent and Property</b>	449	411	-8%	421	29	3,499	3,355	-4%	5,126	4,980	-3%	1,217	1,317	+8%
<b>Total Aggravated Assaults</b>	35	42	+20%	27	7	222	250	+13%	317	337	+6%	89	107	+20%
<b>Total Burglaries</b>	138	112	-19%	141	18	1,191	1,077	-10%	1,750	1,635	-7%	387	424	+10%
<b>Total Robberies</b>	38	32	-16%	36	7	316	276	-13%	471	404	-14%	87	105	+21%
<b>Total Simple &amp; Agg Assaults</b>	88	101	+15%	73	10	579	588	+2%	897	863	-4%	206	252	+22%
<b>Firearm crimes + 187</b>	19	29	+53%	22	5	178	167	-6%	272	246	-10%	62	59	-5%
<b>CALLS FOR SERVICE</b>														
Drug Calls	18	10	-44%	23	7	152	197	+30%	236	309	+31%	95	49	-48%
Loitering/Prostitution Calls	101	65	-36%	60	15	436	562	+29%	645	801	+24%	209	244	+17%
Person with a Gun Calls	18	16	-11%	17	3	123	136	+11%	203	197	-3%	48	50	+4%
Shots Fired Calls	94	83	-12%	101	24	851	743	-13%	1,292	1,122	-13%	264	281	+6%
<b>SHOTSPOTTER</b>														
Activations	41	46	+12%	54	13	461	380	-18%	708	581	-18%	151	123	-19%
Rounds detected	227	333	+47%	286	98	2,209	2,164	-2%	3,384	3,468	+2%	658	784	+19%



CITYWIDE CFS 2018	July	August	Month Change	Average per mo	Std Dev. Value (+)	YTD2017	YTD2018	YTD %	YOY2017	YOY2018	YOY %
<b>COMMUNICATIONS</b>											
911 Calls	1,925	1,814	-6%	2,002	154	17,060	15,065	-12%	25,127	22,919	-9%
Other Incoming Calls	6,074	5,679	-7%	5,861	416	49,696	45,327	-9%	73,989	66,667	-10%
<b>Total Calls</b>	<b>7,999</b>	<b>7,493</b>	<b>-6%</b>	<b>7,912</b>	<b>547</b>	<b>66,756</b>	<b>60,392</b>	<b>-10%</b>	<b>99,116</b>	<b>89,586</b>	<b>-10%</b>
Calls Routed to Patrol	5,365	4,958	-8%	5,312	271	43,805	40,917	-7%	65,725	61,770	-6%
Officer-Initiated Calls	2,634	2,535	-4%	2,550	333	22,951	19,475	-15%	33,391	27,816	-17%
<b>Total Patrol Calls</b>	<b>7,999</b>	<b>7,493</b>	<b>-6%</b>	<b>7,863</b>	<b>528</b>	<b>66,756</b>	<b>60,392</b>	<b>-10%</b>	<b>99,116</b>	<b>89,586</b>	<b>-10%</b>
<b>% Officer-Initiated Calls</b>	<b>33%</b>	<b>34%</b>	<b>+3%</b>	<b>32%</b>	<b>3%</b>	<b>34%</b>	<b>32%</b>	<b>-6%</b>	<b>34%</b>	<b>31%</b>	<b>-3%</b>
<b>CALL VOLUME</b>											
Priority 1 (P1)	156	151	-3%	160	14	1,304	1,296	-1%	1,916	1,927	+1%
Priority 2 (P2)	2,608	2,339	-10%	2,518	198	21,347	19,004	-11%	31,818	28,621	-10%
Priority 3 (P3)	2,195	2,004	-9%	2,332	200	19,857	17,141	-14%	29,915	26,063	-13%
<b>AVERAGE OF MEDIAN RESPONSE TIME (in minutes:seconds)</b>											
P1 Median Reponse Time	06:32	06:24	-2%	06:18	00:24	06:13	06:18	+1%	06:14	06:22	+2%
P2 Median Response Time	12:42	12:21	-3%	12:16	00:55	12:16	12:46	+4%	11:53	12:38	+6%
P3 Median Response Time	13:28	15:18	+14%	10:50	03:22	08:51	13:33	+53%	08:19	13:22	+61%
<b>CRIME RATES BY POPULATION FACTOR</b>											
<b>Crime Rate by Population (per 100k)</b>	<b>July</b>	<b>August</b>	<b>Month Change</b>			<b>YTD2017</b>	<b>YTD2018</b>	<b>YTD %</b>	<b>YOY2017</b>	<b>YOY2018</b>	<b>YOY %</b>
Population size	110,000	110,000	-			110,000	110,000	-	110,000	110,000	-
Violent Crime per Capita	75.45	72.73	-4%			537.3	523.6	-3%	786.4	740.0	-6%
Property Crime per Capita	332.7	300.9	-10%			2643.6	2526.4	-4%	3873.6	3787.3	-2%
Richmond Crime Rate per Capita	408.2	373.6	-8%			3180.9	3050.0	-4%	4660.0	4527.3	-3%
Assaults per Capita	31.8	38.2	+20%			201.8	227.3	+13%	288.2	306.4	+6%
Burglary per Capita	125.5	101.8	-19%			1082.7	979.1	-10%	1590.9	1486.4	-7%
Robbery per Capita	34.5	29.1	-16%			287.3	250.9	-13%	428.2	367.3	-14%
<b>COMMUNITY ENGAGEMENT</b>											
<b>Citywide Community Engagement</b>	<b>July</b>	<b>August</b>	<b>Month Change</b>	<b>Average per mo</b>	<b>Std Dev. Value (+)</b>	<b>YTD2017</b>	<b>YTD2018</b>				
Citywide Events Logged	222	214	-4%	184.83	-	-	1109				
Citywide Unique Location Instances	181	171	-6%	145.5	-	-	873				
Citywide Total Time Logged	143:29	126:17	-12%	131:15	-	-	787:31				
Southern	34:14	44:36	+30%	43:12	-	-	259:12				
Central	46:13	51:48	+12%	38:16	-	-	229:39				
Northern	45:49	43:22	-5%	48:21	-	-	290:06				
<b>TRAFFIC</b>											
<b>Citations</b>	<b>671</b>	<b>585</b>	<b>-13%</b>	<b>479.3</b>	<b>125</b>	<b>-</b>	<b>2,570</b>				
Cites - Southern	234	195	-17%	184.3	52	-	1,041				
Cites - Central	111	56	-50%	74.9	20	-	433				
Cites - Northern	322	316	-2%	180.1	89	-	797				
<b>Impounds</b>	<b>275</b>	<b>296</b>	<b>+8%</b>	<b>302.1</b>	<b>51</b>	<b>-</b>	<b>1,657</b>				
IMP - Southern	92	85	-8%	100.1	16	-	579				
IMP - Central	117	149	+27%	119.4	25	-	660				
IMP - Northern	63	61	-3%	79.8	22	-	401				





SOUTHERN PART 1 CRIMES	Jan	Feb	Mar	Apr	May	Jun	Jul	Aug	Sep	Oct	Nov	Dec	Month %	2 year avg	SD (1SD)	YTD2017	YTD2018	YTD %	YOY2017	YOY2018	YOY %	Last 90 Previous	Last 90 Current	L90 %
<b>VIOLENT CRIMES</b>	<b>Monthly</b>												<b>Quantitative statistics</b>			<b>Year vs Year</b>		<b>12 months vs 12 months</b>			<b>Last 90 days</b>			
[211A] Armed Robbery	6	3	4	1	4	3	6	2	1	5	4	4	-67%	4	2	33	29	-12%	53	43	-19%	9	11	+22%
[212.5] Home Robbery	2	0	0	0	1	0	1	0	0	0	1	0	-100%	0	1	4	4	0%	4	5	+25%	1	1	0%
[211E] Estes Robbery	0	0	0	0	0	0	1	1	0	0	0	1	0%	0	1	3	2	-33%	5	3	-40%	0	2	-%
[211S] Strongarm Robbery	4	6	2	1	5	2	5	3	2	1	4	4	-40%	4	2	31	28	-10%	48	39	-19%	8	10	+25%
[664/211] Attempted Robbery	1	1	2	0	1	0	2	1	1	0	0	0	-50%	1	1	3	8	+167%	4	9	+125%	3	3	0%
[215] Carjacking	1	1	0	0	0	1	3	0	1	0	0	2	-100%	1	1	5	6	+20%	10	9	-10%	0	4	-%
[245 A1] Assault D. Weapon	4	8	6	9	1	6	6	10	5	3	4	6	+67%	5	3	50	50	0%	63	68	+8%	16	22	+38%
[243 D] Aggravated Battery	0	0	0	1	0	1	1	2	2	2	0	0	+100%	1	1	13	5	-62%	13	9	-31%	1	4	+300%
[245 A2] Assault with Firearm	0	2	2	3	1	1	0	4	0	2	4	0	-%	2	1	11	13	+18%	21	19	-10%	6	5	-17%
[664/187] Attempted Homicide	1	0	0	1	0	0	0	0	0	0	0	0	-%	0	0	3	2	-33%	4	2	-50%	1	0	-100%
[187] Homicide	0	0	0	4	0	0	1	0	0	0	0	0	-100%	1	1	5	5	0%	7	5	-29%	4	1	-75%
[246] Shooting @ Dwelling	5	4	3	3	7	3	1	3	2	4	4	1	+200%	4	2	32	29	-9%	44	40	-9%	13	7	-46%
[247] Shooting @ Vehicle	2	0	1	3	0	0	0	0	1	0	2	1	-%	1	1	8	6	-25%	9	10	+11%	4	0	-100%
[261] Rape	0	0	0	3	2	0	2	0	1	1	0	0	-100%	1	1	4	7	+75%	9	9	0%	5	2	-60%
[288] Lewd Acts on Child	2	1	0	3	1	2	0	5	1	0	0	1	-%	1	1	9	14	+56%	11	16	+45%	4	7	+75%
[243 E1] Domestic Battery	11	9	5	2	10	6	4	5	13	7	4	5	+25%	6	3	48	52	+8%	72	81	+13%	17	15	-12%
[273.5] Domestic Battery	2	11	7	4	6	8	14	13	14	6	15	8	-7%	10	4	93	65	-30%	130	108	-17%	17	35	+106%
<b>PROPERTY CRIMES</b>	<b>Monthly</b>												<b>Quantitative statistics</b>			<b>Year vs Year</b>		<b>12 months vs 12 months</b>			<b>Last 90 days</b>			
[451] Arson	0	1	2	0	0	0	4	2	0	2	1	1	-50%	1	1	7	9	+29%	8	13	+63%	2	6	+200%
[459A] Auto Burglary	26	43	30	20	41	35	22	15	35	32	26	49	-32%	34	9	305	232	-24%	444	374	-16%	91	72	-21%
[459C] Commercial Burglary	3	3	4	13	3	6	10	8	6	5	3	8	-20%	6	3	54	50	-7%	73	72	-1%	20	24	+20%
[459R] Residential Burglary	17	7	14	15	21	9	16	9	8	8	7	11	-44%	11	4	94	108	+15%	120	142	+18%	50	34	-32%
[487] Grand Theft	6	11	8	11	9	7	11	7	7	9	3	7	-36%	7	3	50	70	+40%	66	96	+45%	28	25	-11%
[484G/488/484] Petty Theft	22	21	33	26	16	29	29	25	25	29	22	28	-14%	25	5	206	201	-2%	294	305	+4%	75	83	+11%
[10851] Vehicle Theft	34	32	38	38	29	21	33	32	28	32	19	26	-3%	28	6	214	257	+20%	316	362	+15%	105	86	-18%
<b>Total Violent Crimes</b>	21	22	16	26	16	16	28	28	14	14	17	18	0%	20	4	174	173	-1%	252	236	-6%	58	72	+24%
<b>Total Property Crimes</b>	108	118	129	123	119	107	125	98	109	117	81	130	-22%	112	14	930	927	-0%	1,321	1,364	+3%	371	330	-11%
<b>Total Violent and Property</b>	129	140	145	149	135	123	153	126	123	131	98	148	-18%	132	15	1,104	1,100	-0%	1,573	1,600	+2%	429	402	-6%
<b>Total Aggravated Assaults</b>	5	10	8	18	2	8	8	16	7	7	8	6	+100%	9	4	82	75	-9%	108	103	-5%	28	32	+14%
<b>Total Burglaries</b>	46	53	48	48	65	50	48	32	49	45	36	68	-33%	51	9	453	390	-14%	637	588	-8%	161	130	-19%
<b>Total Robberies</b>	14	11	8	2	11	6	18	7	5	6	9	11	-61%	10	4	79	77	-3%	124	108	-13%	21	31	+48%
<b>CALLS FOR SERVICE</b>	<b>Monthly</b>												<b>Quantitative statistics</b>			<b>Year vs Year</b>		<b>12 months vs 12 months</b>			<b>Last 90 days</b>			
Drugs	8	6	4	6	6	6	2	2	5	14	5	5	0%	5	3	37	40	+8%	54	69	+28%	16	10	-38%
Loitering 647B	13	9	8	13	13	6	17	8	20	18	22	9	-53%	16	6	144	87	-40%	226	156	-31%	34	31	-9%
Person with gun	9	6	2	4	2	7	5	2	8	0	8	2	-60%	5	2	36	37	+3%	55	55	0%	8	14	+75%
Shooting	39	20	22	32	19	27	24	24	26	28	29	23	0%	30	11	261	207	-21%	398	313	-21%	73	75	+3%
<b>SHOTSPOTTER</b>	<b>Monthly</b>												<b>Quantitative statistics</b>			<b>Year vs Year</b>		<b>12 months vs 12 months</b>			<b>Last 90 days</b>			
Activations	24	14	15	19	11	6	10	13	7	15	16	23	+30%	19	9	173	112	-35%	271	173	-36%	45	29	-36%
Rounds Detected	163	50	75	107	56	51	50	97	62	65	72	214	+94%	107	75	946	649	-31%	1,517	1,062	-30%	238	198	-17%



# RICHMOND POLICE DEPARTMENT

**PRE-UCR REPORT**  
\*as of reports completed on  
9/10/18



BEAT 1 SOUTHERN	July	Aug	+/-	MON %	YoY17	YoY18	+/- %	L90P	L90N	+/- %
<b>Violent Crimes</b>					<b>YOY 2017- 2018</b>			<b>LAST90DAYS</b>		
Robbery 211A Armed	1	0	-1	-100%	9	9	0%	2	2	0%
Robbery 212.5 Home	0	0	0	-%	0	0	-%	0	0	-%
Robbery 211E Estes	1	0	-1	-100%	1	2	+100%	0	1	-%
Robbery 211S Strongarm	3	2	-1	-33%	11	11	0%	2	5	+150%
Robbery 664/211 Attempt	0	0	0	-%	0	0	-%	0	0	-%
Carjacking 215	0	0	0	-%	6	3	-50%	0	0	-%
Assault DW 245 A1	2	2	0	0%	12	17	+42%	4	7	+75%
Aggravated Battery 243 D	1	0	-1	-100%	4	2	-50%	1	1	0%
Assault Firearm 245 A2	0	1	1	-%	6	3	-50%	0	1	-%
Attempt Homicide 664/187	0	0	0	-%	0	1	-%	0	0	-%
Homicide 187	0	0	0	-%	1	0	-100%	0	0	-%
Shooting @ Dwelling 246	1	1	0	0%	8	5	-38%	1	2	+100%
Shooting @ Vehicle 247	0	0	0	-%	0	2	-%	0	0	-%
Rape 261	0	0	0	-%	3	2	-33%	2	0	-100%
Child, Sodomy 288 289	0	3	3	-%	4	9	+125%	2	4	+100%
Battery 243 E1	1	1	0	0%	6	17	+183%	4	3	-25%
Battery 273.5	6	4	-2	-33%	22	26	+18%	2	15	+650%
<b>Property Crimes</b>					<b>YOY 2017- 2018</b>			<b>LAST90DAYS</b>		
Arson 451	1	0	-1	-100%	2	3	+50%	0	1	-%
Auto Burglary 459 A	4	4	0	0%	96	76	-21%	26	10	-62%
Commercial Burglary 459 C	3	3	0	0%	37	26	-30%	5	9	+80%
Residential Burglary 459 R	4	2	-2	-50%	23	31	+35%	7	7	0%
Grand Theft 487	4	3	-1	-25%	29	51	+76%	16	11	-31%
Petty Theft 484 488	7	4	-3	-43%	101	111	+10%	33	20	-39%
Vehicle Theft 10851	7	10	3	+43%	75	107	+43%	34	24	-29%
<b>Total Violent Crimes</b>	<b>8</b>	<b>7</b>	<b>-1</b>	<b>-13%</b>	<b>57</b>	<b>59</b>	<b>+4%</b>	<b>13</b>	<b>21</b>	<b>+62%</b>
<b>Total Property Crimes</b>	<b>30</b>	<b>26</b>	<b>-4</b>	<b>-13%</b>	<b>363</b>	<b>405</b>	<b>+12%</b>	<b>121</b>	<b>82</b>	<b>-32%</b>
<b>Total Violent and Property</b>	<b>38</b>	<b>33</b>	<b>-5</b>	<b>-13%</b>	<b>420</b>	<b>464</b>	<b>+10%</b>	<b>134</b>	<b>103</b>	<b>-23%</b>
<b>Total Burglaries</b>	<b>11</b>	<b>9</b>	<b>-2</b>	<b>-18%</b>	<b>156</b>	<b>133</b>	<b>-15%</b>	<b>38</b>	<b>26</b>	<b>-32%</b>
<b>Percentage of Citywide</b>	<b>8%</b>	<b>8%</b>	<b>+0%</b>		<b>9%</b>	<b>8%</b>		<b>10%</b>	<b>6%</b>	
<b>Total Robberies</b>	<b>5</b>	<b>2</b>	<b>-3</b>	<b>-60%</b>	<b>27</b>	<b>25</b>	<b>-7%</b>	<b>4</b>	<b>8</b>	<b>+100%</b>
<b>Percentage of Citywide</b>	<b>13%</b>	<b>6%</b>	<b>-7%</b>		<b>6%</b>	<b>6%</b>		<b>5%</b>	<b>8%</b>	
<b>Vehicle Theft % Citywide</b>	<b>7%</b>	<b>11%</b>	<b>+4%</b>		<b>6%</b>	<b>9%</b>		<b>10%</b>	<b>8%</b>	
<b>Calls for Service</b>					<b>YOY 2017- 2018</b>			<b>LAST90DAYS</b>		
Drugs	0	1	1	-%	30	30	0%	8	3	-63%
Loitering 647B	8	0	-8	-100%	151	77	-49%	8	10	+25%
Person with gun	2	0	-2	-100%	12	8	-33%	1	3	+200%
Shooting	6	5	-1	-17%	97	73	-25%	20	18	-10%
<b>Shotspotter</b>					<b>YOY 2017- 2018</b>			<b>LAST90DAYS</b>		
Activations (SSA)	4	1	-3	-75%	48	20	-58%	9	5	-44%
Rounds Detected (SSR)	8	1	-7	-88%	245	71	-71%	51	9	-82%
<b>Percentage of Citywide (SSA)</b>	<b>10%</b>	<b>2%</b>	<b>-8%</b>		<b>7%</b>	<b>3%</b>		<b>6%</b>	<b>4%</b>	
<b>Percentage of Citywide (SSR)</b>	<b>4%</b>	<b>0%</b>	<b>-3%</b>		<b>7%</b>	<b>2%</b>		<b>8%</b>	<b>1%</b>	

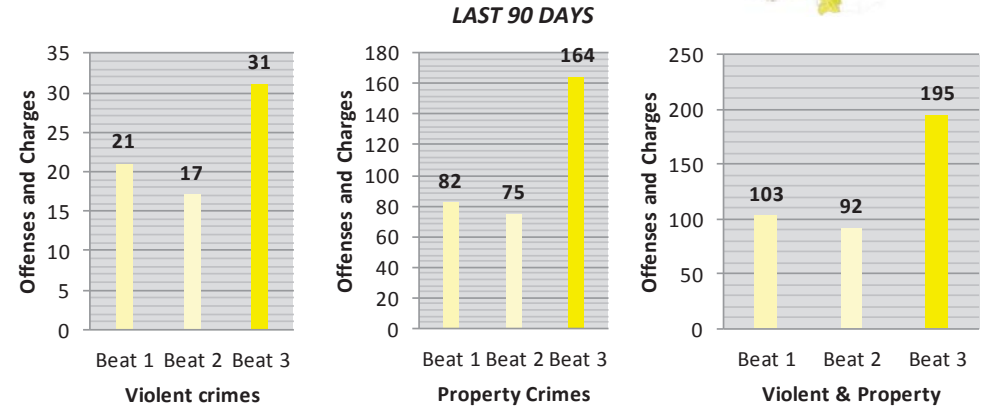
BEAT 2 SOUTHERN	July	Aug	+/-	MON %	YoY17	YoY18	+/- %	L90P	L90N	+/- %
<b>Violent Crimes</b>					<b>YOY 2017- 2018</b>			<b>LAST90DAYS</b>		
Robbery 211A Armed	2	0	-2	-100%	14	16	+14%	3	4	+33%
Robbery 212.5 Home	0	0	0	-%	1	2	+100%	1	0	-100%
Robbery 211E Estes	0	0	0	-%	0	0	-%	0	0	-%
Robbery 211S Strongarm	0	1	1	-%	10	12	+20%	3	1	-67%
Robbery 664/211 Attempt	0	1	1	-%	0	4	-%	2	1	-50%
Carjacking 215	1	0	-1	-100%	2	3	+50%	0	1	-%
Assault DW 245 A1	2	1	-1	-50%	16	14	-13%	4	6	+50%
Aggravated Battery 243 D	0	1	1	-%	3	4	+33%	0	2	-%
Assault Firearm 245 A2	0	1	1	-%	7	7	0%	0	2	-%
Attempt Homicide 664/187	0	0	0	-%	1	0	-100%	0	0	-%
Homicide 187	0	0	0	-%	2	3	+50%	1	0	-100%
Shooting @ Dwelling 246	0	0	0	-%	13	16	+23%	3	2	-33%
Shooting @ Vehicle 247	0	0	0	-%	2	3	+50%	0	0	-%
Rape 261	0	0	0	-%	3	2	-33%	2	0	-100%
Child, Sodomy 288 289	0	0	0	-%	2	0	-100%	0	0	-%
Battery 243 E1	1	1	0	0%	21	18	-14%	3	3	0%
Battery 273.5	5	2	-3	-60%	29	40	+38%	6	8	+33%
<b>Property Crimes</b>					<b>YOY 2017- 2018</b>			<b>LAST90DAYS</b>		
Arson 451	0	0	0	-%	1	0	-100%	0	0	-%
Auto Burglary 459 A	3	0	-3	-100%	46	38	-17%	6	6	0%
Commercial Burglary 459 C	1	3	2	+200%	5	14	+180%	3	4	+33%
Residential Burglary 459 R	6	0	-6	-100%	17	25	+47%	10	7	-30%
Grand Theft 487	3	1	-2	-67%	7	11	+57%	3	4	+33%
Petty Theft 484 488	10	10	0	0%	42	92	+119%	20	28	+40%
Vehicle Theft 10851	10	10	0	0%	67	108	+61%	28	26	-7%
<b>Total Violent Crimes</b>	<b>5</b>	<b>5</b>	<b>0</b>	<b>0%</b>	<b>61</b>	<b>67</b>	<b>+10%</b>	<b>16</b>	<b>17</b>	<b>+6%</b>
<b>Total Property Crimes</b>	<b>33</b>	<b>24</b>	<b>-9</b>	<b>-27%</b>	<b>185</b>	<b>288</b>	<b>+56%</b>	<b>70</b>	<b>75</b>	<b>+7%</b>
<b>Total Violent and Property</b>	<b>38</b>	<b>29</b>	<b>-9</b>	<b>-24%</b>	<b>246</b>	<b>355</b>	<b>+44%</b>	<b>86</b>	<b>92</b>	<b>+7%</b>
<b>Total Burglaries</b>	<b>10</b>	<b>3</b>	<b>-7</b>	<b>-70%</b>	<b>68</b>	<b>77</b>	<b>+13%</b>	<b>19</b>	<b>17</b>	<b>-11%</b>
<b>Percentage of Citywide</b>	<b>7%</b>	<b>3%</b>	<b>-5%</b>		<b>4%</b>	<b>5%</b>		<b>5%</b>	<b>4%</b>	
<b>Total Robberies</b>	<b>3</b>	<b>2</b>	<b>-1</b>	<b>-33%</b>	<b>27</b>	<b>37</b>	<b>+37%</b>	<b>9</b>	<b>7</b>	<b>-22%</b>
<b>Percentage of Citywide</b>	<b>8%</b>	<b>6%</b>	<b>-2%</b>		<b>6%</b>	<b>9%</b>		<b>10%</b>	<b>7%</b>	
<b>Vehicle Theft % Citywide</b>	<b>10%</b>	<b>11%</b>	<b>+1%</b>		<b>5%</b>	<b>9%</b>		<b>8%</b>	<b>9%</b>	
<b>Calls for Service</b>					<b>YOY 2017- 2018</b>			<b>LAST90DAYS</b>		
Drugs	1	0	-1	-100%	30	21	-30%	6	4	-33%
Loitering 647B	1	2	1	+100%	31	23	-26%	6	4	-33%
Person with gun	0	0	0	-%	20	16	-20%	1	2	+100%
Shooting	4	6	2	+50%	137	80	-42%	13	18	+38%
<b>Shotspotter</b>					<b>YOY 2017- 2018</b>			<b>LAST90DAYS</b>		
Activations (SSA)	2	5	3	+150%	130	74	-43%	13	12	-8%
Rounds Detected (SSR)	10	40	30	+300%	690	434	-37%	22	89	+305%
<b>Percentage of Citywide (SSA)</b>	<b>5%</b>	<b>11%</b>	<b>6%</b>		<b>18%</b>	<b>13%</b>		<b>9%</b>	<b>10%</b>	
<b>Percentage of Citywide (SSR)</b>	<b>4%</b>	<b>12%</b>	<b>8%</b>		<b>20%</b>	<b>13%</b>		<b>3%</b>	<b>11%</b>	



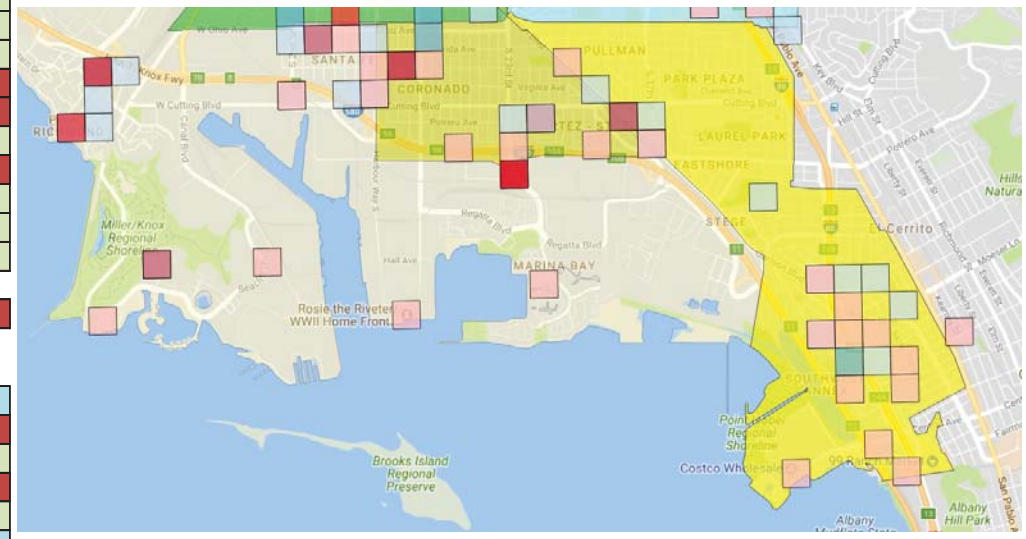
# RICHMOND POLICE DEPARTMENT

**PRE-UCR REPORT**  
\*as of reports completed on  
9/10/18

BEAT 3 SOUTHERN	July	Aug	+/-	MON%	YOY17	YOY18	+/- %	L90P	L90N	+/- %
<b>Violent Crimes</b>					<b>YOY 2017- 2018</b>			<b>LAST90DAYS</b>		
Robbery 211A Armed	3	2	-1	-33%	26	22	-15%	4	5	+25%
Robbery 212.5 Home	1	0	-1	-100%	2	5	+150%	0	1	-%
Robbery 211E Estes	0	1	1	-%	4	1	-%	0	1	-%
Robbery 211S Strongarm	2	0	-2	-%	22	17	-23%	3	4	+33%
Robbery 664/211 Attempt	2	0	-2	-100%	4	5	+25%	1	2	+100%
Carjacking 215	0	0	0	-%	1	1	0%	0	0	-%
Assault DW 245 A1	2	7	5	+250%	27	38	+41%	6	9	+50%
Aggravated Battery 243 D	0	1	1	-%	6	5	-17%	0	1	-%
Assault Firearm 245 A2	0	2	2	-%	7	12	+71%	6	2	-67%
Attempt Homicide 664/187	0	0	0	-%	2	1	-50%	1	0	-100%
Homicide 187	1	0	-1	-100%	1	5	+400%	3	1	-67%
Shooting @ Dwelling 246	0	2	2	-%	20	21	+5%	6	3	-50%
Shooting @ Vehicle 247	0	0	0	-%	7	6	-14%	4	0	-100%
Rape 261	2	0	-2	-100%	3	6	+100%	2	2	0%
Child, Sodomy 288 289	0	2	2	-%	4	8	+100%	2	3	+50%
Battery 243 E1	2	3	1	+50%	43	53	+23%	10	9	-10%
Battery 273.5	3	8	5	+167%	73	55	-25%	10	13	+30%
<b>Property Crimes</b>					<b>YOY 2017- 2018</b>			<b>LAST90DAYS</b>		
Arson 451	4	2	-2	-50%	4	11	+175%	2	6	+200%
Auto Burglary 459 A	15	11	-4	-27%	270	296	+10%	63	56	-11%
Commercial Burglary 459 C	6	2	-4	-67%	26	36	+38%	12	11	-8%
Residential Burglary 459 R	6	7	1	+17%	72	90	+25%	33	20	-39%
Grand Theft 487	4	3	-1	-25%	21	39	+86%	9	10	+11%
Petty Theft 484 488	12	1	-11	-92%	124	117	-6%	22	25	+14%
Vehicle Theft 10851	16	12	-4	-25%	163	174	+7%	43	36	-16%
<b>Total Violent Crimes</b>	<b>13</b>	<b>15</b>	<b>2</b>	<b>+15%</b>	<b>109</b>	<b>126</b>	<b>+16%</b>	<b>28</b>	<b>31</b>	<b>+11%</b>
<b>Total Property Crimes</b>	<b>63</b>	<b>38</b>	<b>-25</b>	<b>-40%</b>	<b>680</b>	<b>763</b>	<b>+12%</b>	<b>184</b>	<b>164</b>	<b>-11%</b>
<b>Total Violent and Property</b>	<b>76</b>	<b>53</b>	<b>-23</b>	<b>-30%</b>	<b>789</b>	<b>889</b>	<b>+13%</b>	<b>212</b>	<b>195</b>	<b>-8%</b>
<b>Total Burglaries</b>	<b>27</b>	<b>20</b>	<b>-7</b>	<b>-26%</b>	<b>368</b>	<b>422</b>	<b>+15%</b>	<b>108</b>	<b>87</b>	<b>-19%</b>
<b>Percentage of Citywide</b>	<b>20%</b>	<b>18%</b>	<b>-2%</b>		<b>21%</b>	<b>26%</b>		<b>28%</b>	<b>21%</b>	
<b>Total Robberies</b>	<b>8</b>	<b>3</b>	<b>-5</b>	<b>-63%</b>	<b>59</b>	<b>51</b>	<b>-14%</b>	<b>8</b>	<b>13</b>	<b>+63%</b>
<b>Percentage of Citywide</b>	<b>21%</b>	<b>9%</b>	<b>-12%</b>		<b>13%</b>	<b>13%</b>		<b>9%</b>	<b>12%</b>	
<b>Vehicle Theft % Citywide</b>	<b>15%</b>	<b>13%</b>	<b>-2%</b>		<b>13%</b>	<b>14%</b>		<b>13%</b>	<b>12%</b>	
<b>Calls for Service</b>					<b>YOY 2017- 2018</b>			<b>LAST90DAYS</b>		
Drugs	1	1	0	0%	17	17	0%	2	3	+50%
Loitering 647B	8	5	-3	-38%	37	55	+49%	20	16	-20%
Person with gun	3	2	-1	-33%	25	31	+24%	6	9	+50%
Shooting	14	13	-1	-7%	167	155	-7%	40	39	-3%
<b>Shotspotter</b>					<b>YOY 2017- 2018</b>			<b>LAST90DAYS</b>		
Activations (SSA)	4	7	3	+75%	97	82	-15%	26	12	-54%
Rounds Detected (SSR)	32	56	24	+75%	605	557	-8%	165	100	-39%
<b>Percentage of Citywide (SSA)</b>	<b>10%</b>	<b>15%</b>	<b>5%</b>		<b>14%</b>	<b>14%</b>		<b>17%</b>	<b>10%</b>	
<b>Percentage of Citywide (SSR)</b>	<b>14%</b>	<b>17%</b>	<b>3%</b>		<b>18%</b>	<b>16%</b>		<b>25%</b>	<b>13%</b>	



### COMMUNITY ENGAGEMENT MAP



SPARSE INSTANCES

SIGNIFICANT INSTANCES

\*note: District data is allocated by beat boundaries, not assigned beats  
AUGUST ZONES (RED) JULY ZONES (BLUE)

DATA COMPARES SOUTHERN BEATS ONLY, NOT ALL BEATS

AUGUST 2018



CENTRAL PART 1 CRIMES	Jan	Feb	Mar	Apr	May	Jun	Jul	Aug	Sep	Oct	Nov	Dec	Month %	2 year avg	SD (1SD)	YTD2017	YTD2018	YTD %	YOY2017	YOY2018	YOY %	Last 90 Previous	Last 90 Current	L90 %
<b>VIOLENT CRIMES</b>	<b>Monthly</b>												<b>Quantitative statistics</b>			<b>Year vs Year</b>			<b>12 months vs 12 months</b>			<b>Last 90 days</b>		
[211A] Armed Robbery	6	3	0	2	4	2	4	2	1	6	3	7	-50%	4	2	44	23	-48%	63	40	-37%	6	8	+33%
[212.5] Home Robbery	0	0	0	0	0	0	0	2	0	1	0	0	-%	0	1	2	2	0%	7	3	-57%	0	2	-%
[211E] Estes Robbery	0	0	1	1	0	0	0	1	0	0	1	1	-%	0	0	2	3	+50%	2	5	+150%	2	1	-50%
[211S] Strongarm Robbery	3	4	2	7	4	8	4	6	5	7	8	5	+50%	5	2	36	38	+6%	52	63	+21%	13	18	+38%
[664/211] Attempted Robbery	1	1	0	0	2	0	2	1	0	0	0	0	-50%	1	1	8	7	-13%	10	7	-30%	2	3	+50%
[215] Carjacking	1	1	1	1	1	1	2	0	1	0	1	0	-100%	1	1	7	8	+14%	13	10	-23%	3	3	0%
[245 A1] Assault D. Weapon	9	9	6	6	5	9	8	4	6	6	9	2	-50%	6	2	40	56	+40%	58	79	+36%	17	21	+24%
[243 D] Aggravated Battery	1	1	1	3	0	2	3	1	1	0	0	0	-67%	1	1	6	12	+100%	10	13	+30%	4	6	+50%
[245 A2] Assault with Firearm	5	3	3	2	3	0	3	5	1	5	2	5	+67%	3	1	22	24	+9%	34	37	+9%	8	8	0%
[664/187] Attempted Homicide	0	1	0	0	0	0	1	1	0	0	0	0	0%	0	0	1	3	+200%	1	3	+200%	0	2	-%
[187] Homicide	0	0	0	0	1	1	0	4	0	0	1	0	-%	0	1	3	6	+100%	4	7	+75%	1	5	+400%
[246] Shooting @ Dwelling	9	1	6	0	2	3	4	8	3	5	4	2	+100%	4	3	31	33	+6%	51	47	-8%	8	15	+88%
[247] Shooting @ Vehicle	2	1	1	1	0	1	2	1	0	0	1	2	-50%	1	1	7	9	+29%	12	12	0%	2	4	+100%
[261] Rape	0	1	1	1	1	0	0	0	0	0	0	1	-%	1	1	10	4	-60%	13	5	-62%	3	0	-100%
[288, 289] Child, Sodomy	2	0	0	2	3	1	3	4	0	0	3	5	+33%	2	1	11	15	+36%	15	23	+53%	5	8	+60%
[243 E1] Domestic Battery	6	5	11	5	9	2	5	10	4	3	3	12	+100%	5	3	31	53	+71%	54	75	+39%	25	17	-32%
[273.5] Domestic Battery	8	2	7	5	5	10	9	15	5	9	13	10	+67%	9	4	59	61	+3%	118	98	-17%	17	34	+100%
<b>PROPERTY CRIMES</b>	<b>Monthly</b>												<b>Quantitative statistics</b>			<b>Year vs Year</b>			<b>12 months vs 12 months</b>			<b>Last 90 days</b>		
[451] Arson	2	1	2	3	1	3	4	6	3	3	2	1	+50%	2	1	12	22	+83%	18	31	+72%	6	13	+117%
[459A] Auto Burglary	14	10	15	7	7	11	14	10	13	9	11	21	-29%	13	4	99	88	-11%	174	142	-18%	29	35	+21%
[459C] Commercial Burglary	3	2	0	0	0	2	0	2	0	0	0	1	-%	1	1	12	9	-25%	18	10	-44%	0	4	-%
[459R] Residential Burglary	5	1	11	6	6	2	2	3	2	3	7	3	+50%	5	3	57	36	-37%	76	51	-33%	23	7	-70%
[487] Grand Theft	9	4	3	4	3	5	7	4	4	9	2	4	-43%	5	2	39	39	0%	53	58	+9%	10	16	+60%
[484G/488/484] Petty Theft	10	12	18	7	15	11	21	18	18	23	15	20	-14%	16	4	145	112	-23%	200	188	-6%	40	50	+25%
[10851] Vehicle Theft	50	35	46	37	34	36	22	24	28	42	27	33	+9%	31	9	208	284	+37%	322	414	+29%	117	82	-30%
<b>Total Violent Crimes</b>	28	24	15	25	24	24	30	31	15	25	28	26	+3%	24	5	192	201	+5%	282	295	+5%	64	85	+33%
<b>Total Property Crimes</b>	93	65	95	64	66	70	70	67	68	89	64	83	-4%	73	10	572	590	+3%	861	894	+4%	225	207	-8%
<b>Total Violent and Property</b>	121	89	110	89	90	94	100	98	83	114	92	109	-2%	97	11	764	791	+4%	1,143	1,189	+4%	289	292	+1%
<b>Total Aggravated Assaults</b>	15	14	10	11	9	12	15	15	8	11	12	7	0%	10	3	72	101	+40%	107	139	+30%	30	42	+40%
<b>Total Burglaries</b>	22	13	26	13	13	15	16	15	15	12	18	25	-6%	20	5	168	133	-21%	268	203	-24%	52	46	-12%
<b>Total Robberies</b>	11	9	4	11	11	11	12	12	7	14	13	13	0%	11	3	99	81	-18%	147	128	-13%	26	35	+35%
<b>CALLS FOR SERVICE</b>	<b>Monthly</b>												<b>Quantitative statistics</b>			<b>Year vs Year</b>			<b>12 months vs 12 months</b>			<b>Last 90 days</b>		
Drugs	9	5	20	16	11	5	9	7	10	8	7	7	-22%	8	4	50	82	+64%	77	114	+48%	47	21	-55%
Loitering 647B	13	10	11	17	22	20	13	7	13	18	9	9	-46%	14	5	148	113	-24%	185	162	-12%	50	40	-20%
Person with gun	4	4	4	12	8	6	9	4	3	6	5	3	-56%	6	3	47	51	+9%	86	68	-21%	24	19	-21%
Shooting	55	28	33	30	43	43	35	40	24	41	38	43	+14%	38	10	297	307	+3%	453	453	0%	106	118	+11%
<b>SHOTSPOTTER</b>	<b>Monthly</b>												<b>Quantitative statistics</b>			<b>Year vs Year</b>			<b>12 months vs 12 months</b>			<b>Last 90 days</b>		
Activations	35	17	22	24	31	25	25	31	20	34	23	26	+24%	26	6	192	210	+9%	302	313	+4%	77	81	+5%
Rounds Detected	223	149	157	93	102	142	136	219	106	144	91	182	+61%	140	52	1,015	1,221	+20%	1,618	1,744	+8%	352	497	+41%



# RICHMOND POLICE DEPARTMENT

**PRE-UCR REPORT**  
\*as of reports completed on  
9/10/18



BEAT 4 CENTRAL	July	Aug	+/-	MON %	YoY17	YoY18	+/- %	L90P	L90N	+/- %
<b>Violent Crimes</b>					<b>YOY 2017- 2018</b>			<b>LAST90DAYS</b>		
Robbery 211A Armed	2	0	-2	-100%	22	19	-14%	1	2	+100%
Robbery 212.5 Home	0	0	0	-%	2	0	-100%	0	0	-%
Robbery 211 Estes	0	0	0	-%	0	1	-%	0	0	-%
Robbery 211S Strongarm	0	1	1	-%	23	21	-9%	4	2	-50%
Robbery 664/211 Attempt	0	0	0	-%	1	1	0%	0	0	-%
Carjacking 215	0	0	0	-%	3	3	0%	2	0	-100%
Assault DW 245 A1	1	1	0	0%	15	26	+73%	6	3	-50%
Aggravated Battery 243 D	0	0	0	-%	2	1	-50%	0	0	-%
Assault Firearm 245 A2	1	1	0	0%	3	11	+267%	2	2	0%
Attempt Homicide 664/187	0	0	0	-%	0	0	-%	0	0	-%
Homicide 187	0	1	1	-%	0	1	-%	0	1	-%
Shooting @ Dwelling 246	2	1	-1	-50%	19	20	+5%	4	4	0%
Shooting @ Vehicle 247	2	0	-2	-100%	6	6	0%	0	3	-%
Rape 261	0	0	0	-%	8	3	-63%	1	0	-100%
Child, Sodomy 288 289	0	3	3	-%	7	9	+29%	1	4	+300%
Battery 243 E1	0	3	3	-%	14	21	+50%	7	4	-43%
Battery 273.5	4	5	1	+25%	28	34	+21%	7	13	+86%
<b>Property Crimes</b>					<b>YOY 2017- 2018</b>			<b>LAST90DAYS</b>		
Arson 451	2	1	-1	-50%	6	12	+100%	3	5	+67%
Auto Burglary 459 A	5	3	-2	-40%	34	50	+47%	10	10	0%
Commercial Burglary 459 C	0	0	0	-%	3	3	0%	0	1	-%
Residential Burglary 459 R	1	1	0	0%	27	17	-37%	8	2	-75%
Grand Theft 487	1	2	1	+100%	17	12	-29%	3	3	0%
Petty Theft 484 488	4	4	0	0%	56	55	-2%	5	12	+140%
Vehicle Theft 10851	4	8	4	+100%	121	150	+24%	37	25	-32%
<b>Total Violent Crimes</b>	<b>4</b>	<b>7</b>	<b>3</b>	<b>+75%</b>	<b>86</b>	<b>96</b>	<b>+12%</b>	<b>17</b>	<b>14</b>	<b>-18%</b>
<b>Total Property Crimes</b>	<b>17</b>	<b>19</b>	<b>2</b>	<b>+12%</b>	<b>264</b>	<b>299</b>	<b>+13%</b>	<b>66</b>	<b>58</b>	<b>-12%</b>
<b>Total Violent and Property</b>	<b>21</b>	<b>26</b>	<b>5</b>	<b>+24%</b>	<b>350</b>	<b>395</b>	<b>+13%</b>	<b>83</b>	<b>72</b>	<b>-13%</b>
<b>Total Burglaries</b>	<b>6</b>	<b>4</b>	<b>-2</b>	<b>-33%</b>	<b>64</b>	<b>70</b>	<b>+9%</b>	<b>18</b>	<b>13</b>	<b>-28%</b>
<b>Percentage of Citywide</b>	<b>4%</b>	<b>4%</b>	<b>-1%</b>		<b>4%</b>	<b>4%</b>		<b>5%</b>	<b>3%</b>	
<b>Total Robberies</b>	<b>2</b>	<b>1</b>	<b>-1</b>	<b>-50%</b>	<b>51</b>	<b>45</b>	<b>-12%</b>	<b>7</b>	<b>4</b>	<b>-43%</b>
<b>Percentage of Citywide</b>	<b>5%</b>	<b>3%</b>	<b>-2%</b>		<b>11%</b>	<b>11%</b>		<b>8%</b>	<b>4%</b>	
<b>Vehicle Theft % Citywide</b>	<b>4%</b>	<b>9%</b>	<b>+5%</b>		<b>10%</b>	<b>12%</b>		<b>11%</b>	<b>8%</b>	
<b>Calls for Service</b>					<b>YOY 2017- 2018</b>			<b>LAST90DAYS</b>		
Drugs	1	0	-1	-100%	6	24	+300%	15	4	-73%
Loitering 647B	5	1	-4	-80%	25	31	+24%	13	11	-15%
Person with gun	3	2	-1	-33%	30	15	-50%	3	9	+200%
Shooting	11	11	0	0%	130	125	-4%	22	38	+73%
<b>Shotspotter</b>					<b>YOY 2017- 2018</b>			<b>LAST90DAYS</b>		
Activations (SSA)	7	6	-1	-14%	77	84	+9%	15	20	+33%
Rounds Detected (SSR)	35	45	10	+29%	376	458	+22%	88	119	+35%
<b>Percentage of Citywide (SSA)</b>	<b>17%</b>	<b>13%</b>	<b>-4%</b>		<b>11%</b>	<b>14%</b>		<b>10%</b>	<b>16%</b>	
<b>Percentage of Citywide (SSR)</b>	<b>15%</b>	<b>14%</b>	<b>-2%</b>		<b>11%</b>	<b>13%</b>		<b>13%</b>	<b>15%</b>	

BEAT 5 CENTRAL	July	Aug	+/-	MON %	YoY17	YoY18	+/- %	L90P	L90N	+/- %
<b>Violent Crimes</b>					<b>YOY 2017- 2018</b>			<b>LAST90DAYS</b>		
Robbery 211A Armed	0	0	0	-%	18	9	-50%	3	1	-67%
Robbery 212.5 Home	0	0	0	-%	2	0	-100%	0	0	-%
Robbery 211 Estes	0	0	0	-%	0	1	-%	1	0	-100%
Robbery 211S Strongarm	1	2	1	+100%	6	15	+150%	5	5	0%
Robbery 664/211 Attempt	1	0	-1	-100%	2	1	-50%	0	1	-%
Carjacking 215	1	0	-1	-100%	4	4	0%	1	1	0%
Assault DW 245 A1	3	0	-3	-100%	16	21	+31%	5	6	+20%
Aggravated Battery 243 D	0	1	1	-%	3	2	-33%	1	1	0%
Assault Firearm 245 A2	0	0	0	-%	14	10	-29%	5	0	-100%
Attempt Homicide 664/187	1	1	0	0%	1	3	+200%	0	2	-%
Homicide 187	0	2	2	-%	1	4	+300%	1	2	+100%
Shooting @ Dwelling 246	1	1	0	0%	17	20	+18%	5	3	-40%
Shooting @ Vehicle 247	0	0	0	-%	3	2	-33%	1	0	-100%
Rape 261	0	0	0	-%	1	1	0%	1	0	-100%
Child, Sodomy 288 289	1	1	0	0%	2	5	+150%	1	2	+100%
Battery 243 E1	1	4	3	+300%	19	20	+5%	3	6	+100%
Battery 273.5	0	4	4	-%	33	28	-15%	5	9	+80%
<b>Property Crimes</b>					<b>YOY 2017- 2018</b>			<b>LAST90DAYS</b>		
Arson 451	0	2	2	-%	6	10	+67%	3	2	-33%
Auto Burglary 459 A	2	2	0	0%	30	31	+3%	9	5	-44%
Commercial Burglary 459 C	0	0	0	-%	7	3	-57%	0	1	-%
Residential Burglary 459 R	1	1	0	0%	25	15	-40%	3	2	-33%
Grand Theft 487	2	2	0	0%	14	19	+36%	2	6	+200%
Petty Theft 484 488	6	3	-3	-50%	34	44	+29%	10	11	+10%
Vehicle Theft 10851	9	9	0	0%	81	129	+59%	41	29	-29%
<b>Total Violent Crimes</b>	<b>8</b>	<b>7</b>	<b>-1</b>	<b>-13%</b>	<b>70</b>	<b>76</b>	<b>+9%</b>	<b>24</b>	<b>21</b>	<b>-13%</b>
<b>Total Property Crimes</b>	<b>20</b>	<b>19</b>	<b>-1</b>	<b>-5%</b>	<b>197</b>	<b>251</b>	<b>+27%</b>	<b>68</b>	<b>56</b>	<b>-18%</b>
<b>Total Violent and Property</b>	<b>28</b>	<b>26</b>	<b>-2</b>	<b>-7%</b>	<b>267</b>	<b>327</b>	<b>+22%</b>	<b>92</b>	<b>77</b>	<b>-16%</b>
<b>Total Burglaries</b>	<b>3</b>	<b>3</b>	<b>0</b>	<b>0%</b>	<b>62</b>	<b>49</b>	<b>-21%</b>	<b>12</b>	<b>8</b>	<b>-33%</b>
<b>Percentage of Citywide</b>	<b>2%</b>	<b>3%</b>	<b>+1%</b>		<b>4%</b>	<b>3%</b>		<b>3%</b>	<b>2%</b>	
<b>Total Robberies</b>	<b>3</b>	<b>2</b>	<b>-1</b>	<b>-33%</b>	<b>32</b>	<b>30</b>	<b>-6%</b>	<b>10</b>	<b>8</b>	<b>-20%</b>
<b>Percentage of Citywide</b>	<b>8%</b>	<b>6%</b>	<b>-2%</b>		<b>7%</b>	<b>7%</b>		<b>11%</b>	<b>8%</b>	
<b>Vehicle Theft % Citywide</b>	<b>9%</b>	<b>10%</b>	<b>+1%</b>		<b>7%</b>	<b>11%</b>		<b>12%</b>	<b>10%</b>	
<b>Calls for Service</b>					<b>YOY 2017- 2018</b>			<b>LAST90DAYS</b>		
Drugs	0	0	0	-%	31	23	-26%	13	0	-100%
Loitering 647B	2	2	0	0%	41	26	-37%	2	5	+150%
Person w/ Gun	0	0	0	-%	19	14	-26%	7	1	-86%
Shooting	11	13	2	+18%	162	174	+7%	51	38	-25%
<b>Shotspotter</b>					<b>YOY 2017- 2018</b>			<b>LAST90DAYS</b>		
Activations (SSA)	11	15	4	+36%	132	150	+14%	43	38	-12%
Rounds Detected (SSR)	48	74	26	+54%	756	781	+3%	201	179	-11%
<b>Percentage of Citywide (SSA)</b>	<b>27%</b>	<b>33%</b>	<b>6%</b>		<b>19%</b>	<b>26%</b>		<b>28%</b>	<b>31%</b>	
<b>Percentage of Citywide (SSR)</b>	<b>21%</b>	<b>22%</b>	<b>1%</b>		<b>22%</b>	<b>23%</b>		<b>31%</b>	<b>23%</b>	





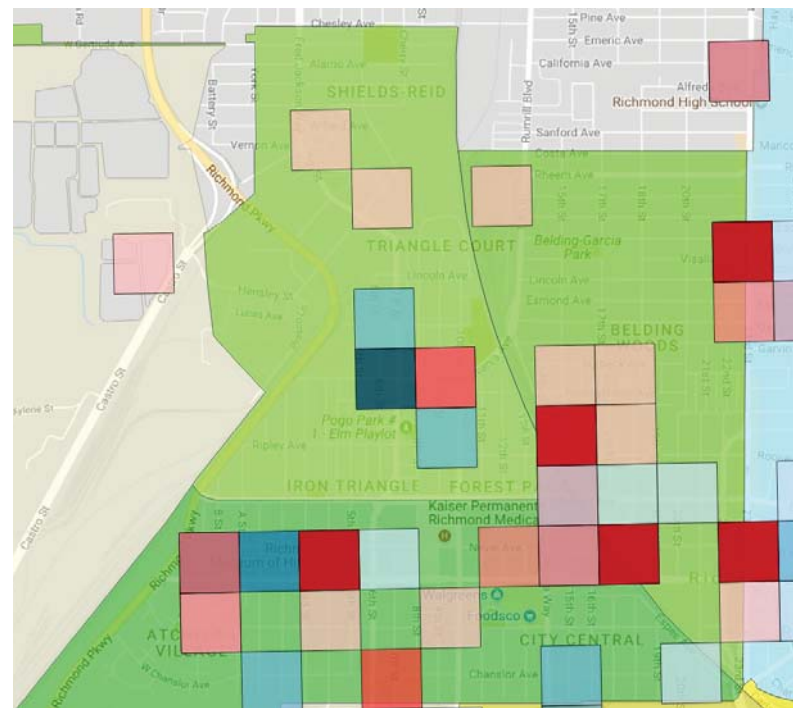
# RICHMOND POLICE DEPARTMENT

**PRE-UCR REPORT**  
\*as of reports completed on  
9/10/18

BEAT 6 CENTRAL	July	Aug	+/-	MON %	YoY17	YoY18	+/- %	L90P	L90N	+/- %
<b>Violent Crimes</b>					<b>YOY 2017- 2018</b>			<b>LAST90DAYS</b>		
Robbery 211A Armed	2	2	0	0%	22	13	-41%	2	5	+150%
Robbery 212.5 Home	0	2	2	-%	3	3	0%	0	2	-%
Robbery 211 Estes	0	1	1	-%	2	4	+100%	1	1	0%
Robbery 211S Strongarm	3	3	0	0%	23	31	+35%	4	11	+175%
Robbery 664/211 Attempt	1	1	0	0%	7	5	-29%	2	2	0%
Carjacking 215	1	0	-1	-100%	6	3	-50%	0	2	-%
Assault DW 245 A1	4	3	-1	-25%	26	32	+23%	6	12	+100%
Aggravated Battery 243 D	3	0	-3	-100%	5	11	+120%	3	5	+67%
Assault Firearm 245 A2	2	4	2	+100%	17	18	+6%	1	6	+500%
Attempt Homicide 664/187	0	0	0	-%	0	1	-%	0	0	-%
Homicide 187	0	1	1	-%	2	1	-50%	0	1	-%
Shooting @ Dwelling 246	1	6	5	+500%	15	16	+7%	1	8	+700%
Shooting @ Vehicle 247	0	0	0	-%	3	5	+67%	1	0	-100%
Rape 261	0	0	0	-%	4	4	0%	2	0	-100%
Child, Sodomy 288 289	2	0	-2	-100%	6	11	+83%	3	2	-33%
Battery 243 E1	4	3	-1	-25%	21	35	+67%	15	7	-53%
Battery 273.5	5	6	1	+20%	56	45	-20%	6	12	+100%
<b>Property Crimes</b>					<b>YOY 2017- 2018</b>			<b>LAST90DAYS</b>		
Arson 451	2	3	1	+50%	6	11	+83%	0	6	-%
Auto Burglary 459 A	7	5	-2	-29%	108	69	-36%	9	20	+122%
Commercial Burglary 459 C	0	2	2	-%	8	5	-38%	0	2	-%
Residential Burglary 459 R	0	1	1	-%	23	25	+9%	11	2	-82%
Grand Theft 487	4	1	-3	-75%	23	31	+35%	6	8	+33%
Petty Theft 484 488	11	11	0	0%	107	108	+1%	26	27	+4%
Vehicle Theft 10851	9	7	-2	-22%	120	150	+25%	38	28	-26%
<b>Total Violent Crimes</b>	<b>18</b>	<b>17</b>	<b>-1</b>	<b>-6%</b>	<b>123</b>	<b>137</b>	<b>+11%</b>	<b>24</b>	<b>49</b>	<b>+104%</b>
<b>Total Property Crimes</b>	<b>33</b>	<b>30</b>	<b>-3</b>	<b>-9%</b>	<b>395</b>	<b>399</b>	<b>+1%</b>	<b>90</b>	<b>93</b>	<b>+3%</b>
<b>Total Violent and Property</b>	<b>51</b>	<b>47</b>	<b>-4</b>	<b>-8%</b>	<b>518</b>	<b>536</b>	<b>+3%</b>	<b>114</b>	<b>142</b>	<b>+25%</b>
<b>Total Burglaries</b>	<b>7</b>	<b>8</b>	<b>1</b>	<b>+14%</b>	<b>139</b>	<b>99</b>	<b>-29%</b>	<b>20</b>	<b>24</b>	<b>+20%</b>
<b>Percentage of Citywide</b>	<b>5%</b>	<b>7%</b>	<b>+2%</b>		<b>8%</b>	<b>6%</b>		<b>5%</b>	<b>6%</b>	
<b>Total Robberies</b>	<b>7</b>	<b>9</b>	<b>2</b>	<b>+29%</b>	<b>63</b>	<b>59</b>	<b>-6%</b>	<b>9</b>	<b>23</b>	<b>+156%</b>
<b>Percentage of Citywide</b>	<b>18%</b>	<b>28%</b>	<b>+10%</b>		<b>13%</b>	<b>15%</b>		<b>10%</b>	<b>22%</b>	
<b>Vehicle Theft % Citywide</b>	<b>9%</b>	<b>8%</b>	<b>-1%</b>		<b>10%</b>	<b>12%</b>		<b>11%</b>	<b>9%</b>	
<b>Calls for Service</b>					<b>YOY 2017- 2018</b>			<b>LAST90DAYS</b>		
Drugs	8	6	-2	-25%	41	75	+83%	19	16	-16%
Loitering 647B	6	4	-2	-33%	101	102	+1%	35	24	-31%
Person w/ Gun	6	2	-4	-67%	34	39	+15%	14	9	-36%
Shooting	13	16	3	+23%	169	154	-9%	33	42	+27%
<b>Shotspotter</b>					<b>YOY 2017- 2018</b>			<b>LAST90DAYS</b>		
Activations (SSA)	7	10	3	+43%	93	79	-15%	19	23	+21%
Rounds Detected (SSR)	53	100	47	+89%	486	505	+4%	63	199	+216%
<b>Percentage of Citywide (SSA)</b>	<b>17%</b>	<b>22%</b>	<b>5%</b>		<b>13%</b>	<b>14%</b>		<b>13%</b>	<b>19%</b>	
<b>Percentage of Citywide (SSR)</b>	<b>23%</b>	<b>30%</b>	<b>7%</b>		<b>14%</b>	<b>15%</b>		<b>10%</b>	<b>25%</b>	



### COMMUNITY ENGAGEMENT MAP



**SPARSE INSTANCES**

**SIGNIFICANT INSTANCES**

\*note: District data is allocated by beat boundaries, not assigned beats  
**AUGUST ZONES (RED) JULY ZONES (BLUE)**

DATA COMPARES CENTRAL BEATS ONLY, NOT ALL BEATS

**AUGUST 2018**



NORTHERN PART 1 CRIMES	Jan	Feb	Mar	Apr	May	Jun	Jul	Aug	Sep	Oct	Nov	Dec	Month %	2 year avg	SD (1SD)	YTD2017	YTD2018	YTD %	YOY2017	YOY2018	YOY %	Last 90 Previous	Last 90 Current	L90 %
<b>VIOLENT CRIMES</b>	<b>Monthly</b>												<b>Quantitative statistics</b>			<b>Year vs Year</b>			<b>12 months vs 12 months</b>			<b>Last 90 days</b>		
[211A] Armed Robbery	10	4	3	4	5	7	2	2	1	6	4	8	0%	5	3	47	37	-21%	67	56	-16%	12	11	-8%
[212.5] Home Robbery	3	5	0	0	1	0	1	1	0	2	0	2	0%	1	1	5	11	+120%	5	15	+200%	1	2	+100%
[211E] Estes Robbery	0	2	0	1	3	1	0	5	0	0	2	1	-%	1	1	10	12	+20%	12	15	+25%	4	6	+50%
[211S] Strongarm Robbery	3	6	8	5	6	7	4	5	4	7	6	2	+25%	5	2	39	44	+13%	62	63	+2%	19	16	-16%
[664/211] Attempted Robbery	4	1	1	3	1	1	0	0	1	1	1	0	-%	1	1	9	11	+22%	10	14	+40%	5	1	-80%
[215] Carjacking	0	1	1	1	0	3	3	0	0	0	3	1	-100%	1	1	6	9	+50%	9	13	+44%	2	6	+200%
[245 A1] Assault D. Weapon	1	5	9	11	2	6	6	10	6	2	1	2	+67%	5	3	34	50	+47%	47	61	+30%	22	22	0%
[243 D] Aggravated Battery	1	0	0	2	1	4	1	0	3	1	0	1	-100%	1	1	10	9	-10%	16	14	-13%	3	5	+67%
[245 A2] Assault with Firearm	0	2	2	1	1	0	5	0	0	1	2	4	-100%	1	1	10	11	+10%	17	18	+6%	4	5	+25%
[664/187] Attempted Homicide	0	0	0	0	0	0	0	1	1	0	0	0	-%	0	0	2	1	-50%	3	2	-33%	0	1	-%
[187] Homicide	0	0	0	0	2	1	0	0	0	0	2	0	-%	0	1	3	3	0%	5	5	0%	2	1	-50%
[246] Shooting @ Dwelling	5	1	0	1	2	1	2	2	4	5	0	3	0%	3	2	28	14	-50%	37	26	-30%	3	5	+67%
[247] Shooting @ Vehicle	1	1	0	5	1	1	0	0	2	1	0	0	-%	1	1	3	9	+200%	5	12	+140%	6	1	-83%
[261] Rape	0	1	1	0	0	1	2	0	1	0	1	3	-100%	1	1	3	5	+67%	8	10	+25%	1	3	+200%
[288, 289] Child, Sodomy	0	2	0	1	1	1	2	0	0	0	2	2	-100%	1	1	9	7	-22%	10	11	+10%	2	3	+50%
[243 E1] Domestic Battery	2	5	4	6	4	4	10	8	6	3	4	4	-20%	5	2	30	43	+43%	53	60	+13%	14	22	+57%
[273.5] Domestic Battery	9	5	8	7	11	3	11	7	3	12	11	11	-36%	9	3	80	61	-24%	120	98	-18%	26	21	-19%
<b>PROPERTY CRIMES</b>	<b>Monthly</b>												<b>Quantitative statistics</b>			<b>Year vs Year</b>			<b>12 months vs 12 months</b>			<b>Last 90 days</b>		
[451] Arson	1	2	1	0	1	0	0	2	0	0	0	1	-%	1	1	11	7	-36%	11	8	-27%	2	2	0%
[459A] Auto Burglary	47	38	35	42	53	82	53	53	37	63	45	51	0%	44	11	311	403	+30%	454	599	+32%	130	188	+45%
[459C] Commercial Burglary	5	7	6	2	8	6	5	3	11	10	7	7	-40%	6	2	41	42	+2%	63	77	+22%	16	14	-13%
[459R] Residential Burglary	24	8	8	9	10	21	15	9	12	8	20	20	-40%	17	6	174	104	-40%	238	164	-31%	27	45	+67%
[487] Grand Theft	9	5	10	11	6	14	14	14	11	11	13	12	0%	9	3	63	83	+32%	92	130	+41%	27	42	+56%
[484G/488/484] Petty Theft	38	31	36	31	38	44	33	50	25	45	42	46	+52%	38	7	316	301	-5%	455	459	+1%	105	127	+21%
[10851] Vehicle Theft	31	27	45	34	32	43	49	33	33	44	25	39	-33%	42	11	360	294	-18%	562	435	-23%	111	125	+13%
<b>Total Violent Crimes</b>	22	29	25	29	23	32	26	24	17	20	24	26	-8%	24	5	187	210	+12%	271	297	+10%	77	82	+6%
<b>Total Property Crimes</b>	155	118	141	129	148	210	169	164	129	181	152	176	-3%	156	21	1,276	1,234	-3%	1,875	1,872	-0%	418	543	+30%
<b>Total Violent and Property</b>	177	147	166	158	171	242	195	188	146	201	176	202	-4%	180	22	1,463	1,444	-1%	2,146	2,169	+1%	495	625	+26%
<b>Total Aggravated Assaults</b>	2	7	11	14	6	11	12	11	10	4	5	7	-8%	8	3	59	74	+25%	88	100	+14%	31	34	+10%
<b>Total Burglaries</b>	76	53	49	53	71	109	73	65	60	81	72	78	-11%	66	13	526	549	+4%	755	840	+11%	173	247	+43%
<b>Total Robberies</b>	20	19	13	14	16	19	10	13	6	16	16	14	+30%	14	4	116	124	+7%	165	176	+7%	43	42	-2%
<b>CALLS FOR SERVICE</b>	<b>Monthly</b>												<b>Quantitative statistics</b>			<b>Year vs Year</b>			<b>12 months vs 12 months</b>			<b>Last 90 days</b>		
Drugs	9	9	7	12	6	10	7	1	12	8	8	13	-86%	7	3	47	58	+23%	77	99	+29%	25	18	-28%
Loitering 647B	36	19	26	37	12	49	67	47	23	36	23	35	-30%	26	14	136	293	+115%	218	410	+88%	75	163	+117%
Person with gun	6	6	5	2	8	3	4	10	4	5	8	6	+150%	5	2	36	46	+28%	55	69	+25%	15	17	+13%
Shooting	21	21	22	28	27	34	35	24	36	29	30	26	-31%	31	7	265	226	-15%	391	347	-11%	77	93	+21%
<b>SHOTSPOTTER</b>	<b>Monthly</b>												<b>Quantitative statistics</b>			<b>Year vs Year</b>			<b>12 months vs 12 months</b>			<b>Last 90 days</b>		
Activations	3	3	11	13	5	5	6	2	12	9	8	8	-67%	10	4	96	58	-40%	126	95	-25%	29	13	-55%
Rounds Detected	36	36	28	29	11	21	41	17	50	34	24	28	-59%	45	25	481	285	-41%	618	421	-32%	68	79	+16%



# RICHMOND POLICE DEPARTMENT

**PRE-UCR REPORT**  
\*as of reports completed on  
9/10/18

BEAT 7 NORTHERN	July	Aug	+/-	MON %	YoY17	YoY18	+/- %	L90P	L90N	+/- %
<b>Violent Crimes</b>					<b>YOY 2017- 2018</b>			<b>LAST90DAYS</b>		
Robbery 211A Armed	2	2	0	0%	44	41	-7%	8	8	0%
Robbery 212.5 Home	0	1	1	-%	2	7	+250%	0	1	-%
Robbery 211 Estes	0	3	3	-%	6	7	-%	3	3	0%
Robbery 211S Strongarm	4	4	0	0%	53	50	-6%	15	13	-13%
Robbery 664/211 Attempt	0	0	0	-%	7	11	+57%	4	0	-100%
Carjacking 215	3	0	-3	-100%	9	11	+22%	2	5	+150%
Assault DW 245 A1	3	0	-3	-100%	36	36	0%	11	7	-36%
Aggravated Battery 243 D	1	0	-1	-100%	11	11	0%	0	3	-%
Assault Firearm 245 A2	4	0	-4	-100%	10	7	-30%	2	4	+100%
Attempt Homicide 664/187	0	0	0	-%	0	1	-%	0	0	-%
Homicide 187	0	0	0	-%	2	0	-100%	0	0	-%
Shooting @ Dwelling 246	1	1	0	0%	21	15	-29%	2	3	+50%
Shooting @ Vehicle 247	0	0	0	-%	3	9	+200%	4	1	-75%
Rape 261	1	0	-1	-100%	5	10	+100%	1	2	+100%
Child, Sodomy 288 289	1	0	-1	-100%	6	7	+17%	0	2	-%
Battery 243 E1	3	5	2	+67%	26	31	+19%	3	9	+200%
Battery 273.5	4	2	-2	-50%	50	41	-18%	9	6	-33%
<b>Property Crimes</b>					<b>YOY 2017- 2018</b>			<b>LAST90DAYS</b>		
Arson 451	0	1	1	-%	8	3	-63%	2	1	-50%
Auto Burglary 459 A	12	9	-3	-25%	198	200	+1%	36	46	+28%
Commercial Burglary 459 C	0	1	1	-%	32	50	+56%	11	3	-73%
Residential Burglary 459 R	6	1	-5	-83%	132	77	-42%	11	17	+55%
Grand Theft 487	10	4	-6	-60%	43	66	+53%	11	22	+100%
Petty Theft 484 488	14	21	7	+50%	222	264	+19%	57	51	-11%
Vehicle Theft 10851	25	23	-2	-8%	344	323	-6%	83	70	-16%
<b>Total Violent Crimes</b>	19	10	-9	-47%	191	199	+4%	46	48	+4%
<b>Total Property Crimes</b>	67	60	-7	-10%	979	983	+0%	211	210	-0%
<b>Total Violent and Property</b>	86	70	-16	-19%	1,170	1,182	+1%	257	258	+0%
<b>Total Burglaries</b>	18	11	-7	-39%	362	327	-10%	58	66	+14%
<b>Percentage of Citywide</b>	13%	10%	-3%		21%	20%		15%	16%	
<b>Total Robberies</b>	9	10	1	+11%	121	127	+5%	32	30	-6%
<b>Percentage of Citywide</b>	24%	31%	+8%		26%	31%		37%	29%	
<b>Vehicle Theft % Citywide</b>	24%	25%	+1%		28%	26%		25%	24%	
<b>Calls for Service</b>					<b>YOY 2017- 2018</b>			<b>LAST90DAYS</b>		
Drugs	4	1	-3	-75%	41	93	+127%	19	13	-32%
Loitering 647B	66	47	-19	-29%	230	435	+89%	111	159	+43%
Person with gun	1	3	2	+200%	36	36	0%	10	6	-40%
Shooting	26	13	-13	-50%	224	184	-18%	40	57	+43%
<b>Shotspotter</b>					<b>YOY 2017- 2018</b>			<b>LAST90DAYS</b>		
Activations (SSA)	4	2	-2	-50%	88	70	-20%	22	11	-50%
Rounds Detected (SSR)	31	17	-14	-45%	412	338	-18%	56	69	+23%
<b>Percentage of Citywide (SSA)</b>	10%	4%	-5%		12%	12%		15%	9%	
<b>Percentage of Citywide (SSR)</b>	14%	5%	-9%		12%	10%		9%	9%	

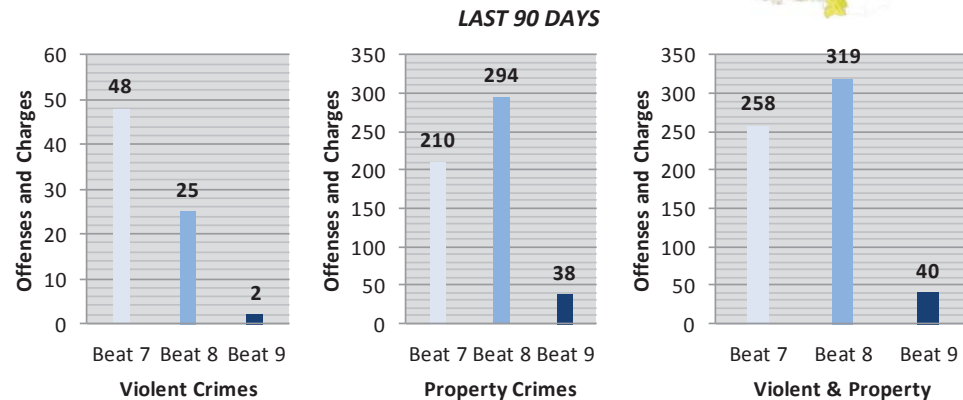
BEAT 8 NORTHERN	July	Aug	+/-	MON %	YoY17	YoY18	+/- %	L90P	L90N	+/- %
<b>Violent Crimes</b>					<b>YOY 2017- 2018</b>			<b>LAST90DAYS</b>		
Robbery 211A Armed	0	0	0	-%	23	18	-22%	4	3	-25%
Robbery 212.5 Home	1	0	-1	-100%	2	4	+100%	0	1	-%
Robbery 211 Estes	0	2	2	-%	6	9	-%	1	3	+200%
Robbery 211S Strongarm	0	1	1	-%	8	14	+75%	3	3	0%
Robbery 664/211 Attempt	0	0	0	-%	3	1	-67%	1	0	-100%
Carjacking 215	0	0	0	-%	0	1	-%	0	1	-%
Assault DW 245 A1	2	4	2	+100%	11	18	+64%	5	8	+60%
Aggravated Battery 243 D	0	0	0	-%	5	3	-40%	1	2	+100%
Assault Firearm 245 A2	1	0	-1	-100%	6	11	+83%	2	1	-50%
Attempt Homicide 664/187	0	1	1	-%	2	1	-50%	0	1	-%
Homicide 187	0	0	0	-%	3	1	-67%	1	0	-100%
Shooting @ Dwelling 246	1	1	0	0%	14	10	-29%	0	2	-%
Shooting @ Vehicle 247	0	0	0	-%	2	4	+100%	2	0	-100%
Rape 261	1	0	-1	-100%	2	3	+50%	0	1	-%
Child, Sodomy 288 289	1	0	-1	-100%	2	2	0%	0	1	-%
Battery 243 E1	5	1	-4	-80%	19	21	+11%	6	9	+50%
Battery 273.5	7	5	-2	-29%	60	63	+5%	15	15	0%
<b>Property Crimes</b>					<b>YOY 2017- 2018</b>			<b>LAST90DAYS</b>		
Arson 451	0	1	1	-%	3	5	+67%	0	1	-%
Auto Burglary 459 A	39	38	-1	-3%	221	407	+84%	86	134	+56%
Commercial Burglary 459 C	4	2	-2	-50%	26	34	+31%	8	10	+25%
Residential Burglary 459 R	8	8	0	0%	61	68	+11%	10	26	+160%
Grand Theft 487	4	7	3	+75%	46	65	+41%	13	16	+23%
Petty Theft 484 488	14	25	11	+79%	188	191	+2%	43	65	+51%
Vehicle Theft 10851	17	8	-9	-53%	174	136	-22%	21	42	+100%
<b>Total Violent Crimes</b>	6	8	2	+33%	73	86	+18%	18	25	+39%
<b>Total Property Crimes</b>	86	89	3	+3%	719	906	+26%	181	294	+62%
<b>Total Violent and Property</b>	92	97	5	+5%	792	992	+25%	199	319	+60%
<b>Total Burglaries</b>	51	48	-3	-6%	308	509	+65%	104	170	+63%
<b>Percentage of Citywide</b>	37%	43%	+6%		18%	31%		27%	40%	
<b>Total Robberies</b>	1	3	2	+200%	42	47	+12%	9	11	+22%
<b>Percentage of Citywide</b>	3%	9%	+7%		9%	12%		10%	10%	
<b>Vehicle Theft % Citywide</b>	16%	9%	-7%		14%	11%		6%	14%	
<b>Calls for Service</b>					<b>YOY 2017- 2018</b>			<b>LAST90DAYS</b>		
Drugs	1	2	1	+100%	22	17	-23%	4	3	-25%
Loitering 647B	1	1	0	0%	12	12	0%	2	2	0%
Person with gun	1	3	2	+200%	19	30	+58%	4	11	+175%
Shooting	13	5	-8	-62%	135	97	-28%	27	27	0%
<b>Shotspotter</b>					<b>YOY 2017- 2018</b>			<b>LAST90DAYS</b>		
Activations (SSA)	2	0	-2	-100%	45	25	-44%	7	2	-71%
Rounds Detected (SSR)	10	0	-10	-100%	218	87	-60%	12	10	-17%
<b>Percentage of Citywide (SSA)</b>	5%	0%	-5%		6%	4%		5%	2%	
<b>Percentage of Citywide (SSR)</b>	4%	0%	-4%		6%	3%		2%	1%	



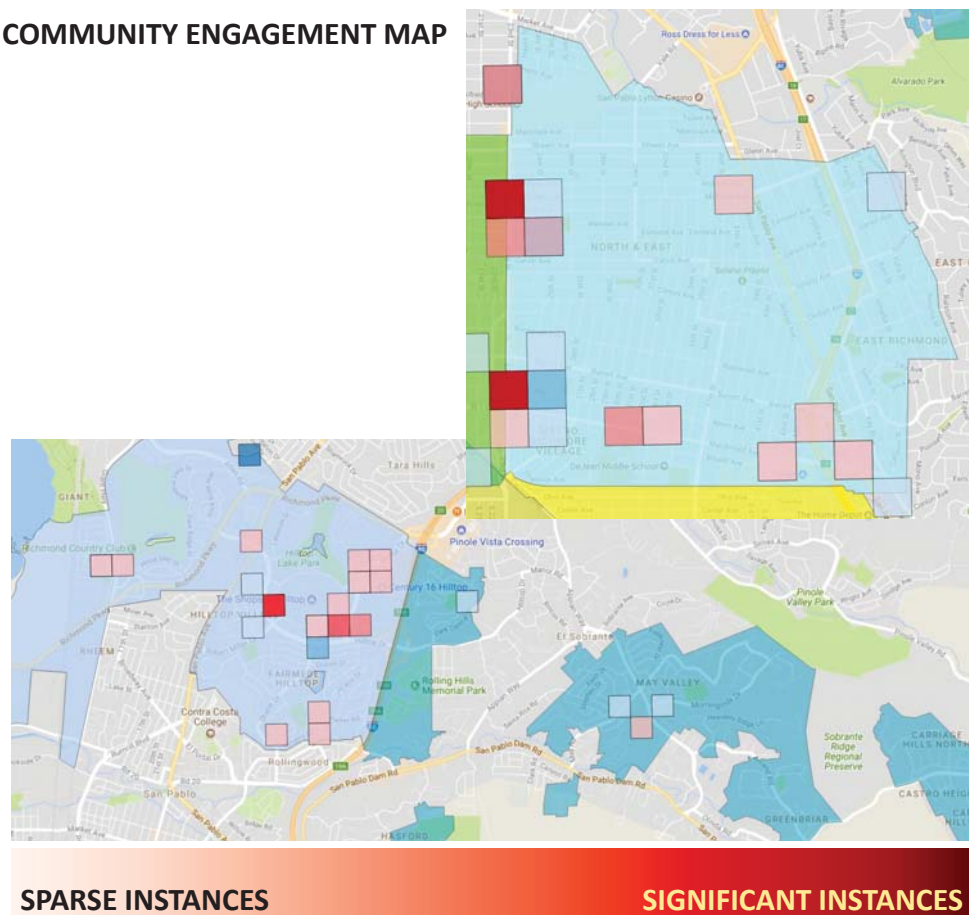
# RICHMOND POLICE DEPARTMENT

**PRE-UCR REPORT**  
\*as of reports completed on 9/10/18

BEAT 9 NORTHERN	July	Aug	+/-	MON %	YoY17	YoY18	+/- %	L90P	L90N	+/- %
<b>Violent Crimes</b>					<b>YOY 2017- 2018</b>			<b>LAST90DAYS</b>		
Robbery 211A Armed	0	0	0	-%	0	2	-%	1	0	-100%
Robbery 212.5 Home	0	0	0	-%	1	5	+400%	1	0	-100%
Robbery 211 Estes	0	0	0	-%	0	0	-%	0	0	-%
Robbery 211S Strongarm	0	0	0	-%	1	2	+100%	1	0	-100%
Robbery 664/211 Attempt	0	0	0	-%	0	2	-%	0	1	-%
Carjacking 215	0	0	0	-%	0	1	-%	0	0	-%
Assault DW 245 A1	1	0	-1	-100%	0	4	-%	2	1	-50%
Aggravated Battery 243 D	0	0	0	-%	0	1	-%	1	0	-100%
Assault Firearm 245 A2	0	0	0	-%	1	1	0%	0	0	-%
Attempt Homicide 664/187	0	0	0	-%	0	0	-%	0	0	-%
Homicide 187	0	0	0	-%	1	2	+100%	0	0	-%
Shooting @ Dwelling 246	0	0	0	-%	2	2	0%	1	0	-100%
Shooting @ Vehicle 247	0	0	0	-%	0	0	-%	0	0	-%
Rape 261	0	0	0	-%	1	0	-100%	0	0	-%
Child, Sodomy 288 289	0	0	0	-%	2	2	0%	1	0	-100%
Battery 243 E1	2	2	0	0%	8	13	+63%	5	4	-20%
Battery 273.5	0	0	0	-%	8	6	-25%	1	0	-100%
<b>Property Crimes</b>					<b>YOY 2017- 2018</b>			<b>LAST90DAYS</b>		
Arson 451	0	0	0	-%	0	0	-%	0	0	-%
Auto Burglary 459 A	2	6	4	+200%	27	23	-15%	4	8	+100%
Commercial Burglary 459 C	1	0	-1	-100%	6	4	-33%	0	1	-%
Residential Burglary 459 R	1	0	-1	-100%	45	33	-27%	7	2	-71%
Grand Theft 487	0	2	2	-%	5	7	+40%	3	3	0%
Petty Theft 484 488	5	4	-1	-20%	34	47	+38%	8	11	+38%
Vehicle Theft 10851	7	2	-5	-71%	42	32	-24%	6	13	+117%
<b>Total Violent Crimes</b>	<b>1</b>	<b>0</b>	<b>-1</b>	<b>-100%</b>	<b>7</b>	<b>22</b>	<b>+214%</b>	<b>7</b>	<b>2</b>	<b>-71%</b>
<b>Total Property Crimes</b>	<b>16</b>	<b>14</b>	<b>-2</b>	<b>-13%</b>	<b>159</b>	<b>146</b>	<b>-8%</b>	<b>28</b>	<b>38</b>	<b>+36%</b>
<b>Total Violent and Property</b>	<b>17</b>	<b>14</b>	<b>-3</b>	<b>-18%</b>	<b>166</b>	<b>168</b>	<b>+1%</b>	<b>35</b>	<b>40</b>	<b>+14%</b>
<b>Total Burglaries</b>	<b>4</b>	<b>6</b>	<b>2</b>	<b>+50%</b>	<b>78</b>	<b>60</b>	<b>-23%</b>	<b>11</b>	<b>11</b>	<b>0%</b>
<b>Percentage of Citywide</b>	<b>3%</b>	<b>5%</b>	<b>+2%</b>		<b>4%</b>	<b>4%</b>		<b>3%</b>	<b>3%</b>	
<b>Total Robberies</b>	<b>0</b>	<b>0</b>	<b>0</b>	<b>-%</b>	<b>2</b>	<b>12</b>	<b>+500%</b>	<b>3</b>	<b>1</b>	<b>-67%</b>
<b>Percentage of Citywide</b>	<b>0%</b>	<b>0%</b>	<b>0%</b>		<b>0%</b>	<b>3%</b>		<b>3%</b>	<b>1%</b>	
<b>Vehicle Theft % Citywide</b>	<b>7%</b>	<b>2%</b>	<b>-4%</b>		<b>3%</b>	<b>3%</b>		<b>2%</b>	<b>4%</b>	
<b>Calls for Service</b>					<b>YOY 2017- 2018</b>			<b>LAST90DAYS</b>		
Drugs	1	0	-1	-100%	13	9	-31%	2	2	0%
Loitering 647B	0	0	0	-%	3	8	+167%	3	2	-33%
Person with gun	0	0	0	-%	4	3	-25%	1	0	-100%
Shooting	4	2	-2	-50%	43	39	-9%	10	9	-10%
<b>Shotspotter (NO SST SENSORS BEAT 9)</b>					<b>YOY 2017- 2018</b>			<b>LAST90DAYS</b>		
Activations (SSA)	0	0	0	-%	0	0	-%	0	0	-%
Rounds Detected (SSR)	0	0	0	-%	0	0	-%	0	0	-%
<b>Percentage of Citywide (SSA)</b>	<b>0%</b>	<b>0%</b>	<b>0%</b>		<b>0%</b>	<b>0%</b>		<b>0%</b>	<b>0%</b>	
<b>Percentage of Citywide (SSR)</b>	<b>0%</b>	<b>0%</b>	<b>0%</b>		<b>0%</b>	<b>0%</b>		<b>0%</b>	<b>0%</b>	



### COMMUNITY ENGAGEMENT MAP



DATA COMPARES NORTHERN BEATS ONLY, NOT ALL BEATS

\*note: District data is allocated by beat boundaries, not assigned beats  
AUGUST ZONES (RED) JULY ZONES (BLUE)      **AUGUST 2018**